

What do Library of Congress primary sources reveal about Theodore Roosevelt's individual and presidential exercise of power?

TPS EASTERN REGION

Waynesburg University Barbara Kirby, Director



"READING" PORTRAITURE AT A GLANCE

The two key elements to reading portraits are looking and analyzing.

LOOKING

Sitter
Describe the sitter's pose.

Symbols
What objects are seen in the portrait?

Adjectives
Use adjectives to describe the sitter.

Clothing
What clothing is the sitter wearing?

Medium
What medium was used to create the portrait?

Setting
What is the setting of the portrait?

Time Period
In what period of history does the portrait appear to be set?



ANALYZING

Sitter
Who is the sitter? Why is this sitter significant to American history?

Symbols
What might the objects tell us about the sitter?

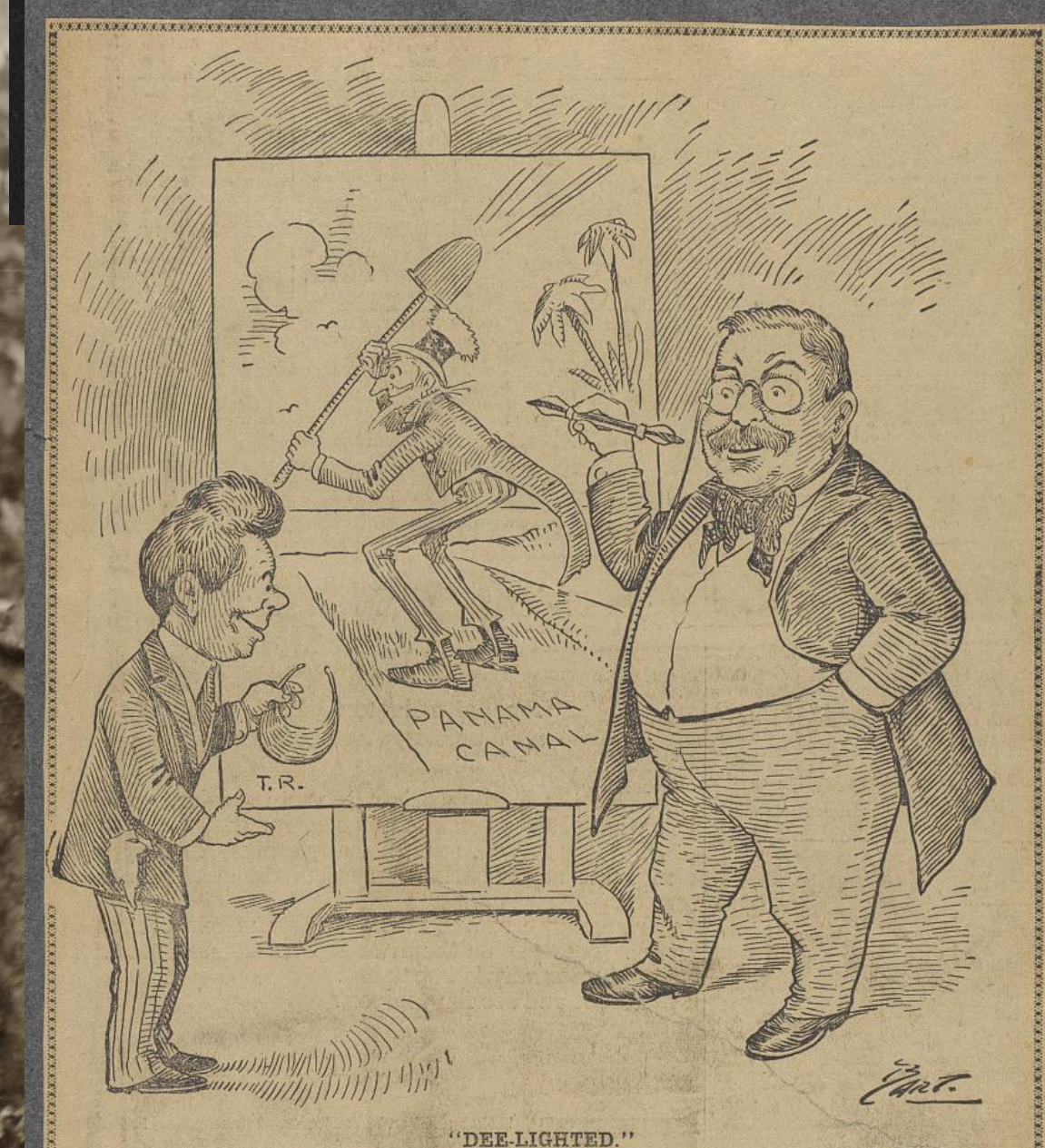
Attributes
What personal qualities might we attribute to the sitter based on the portrait?

Clothing
What might the sitter's clothing tell us about the sitter's profession, personality, social status, or place in history?

Artist
Who is the artist? Why is the artist significant?

Setting
What might the portrait's setting tell us about the sitter?

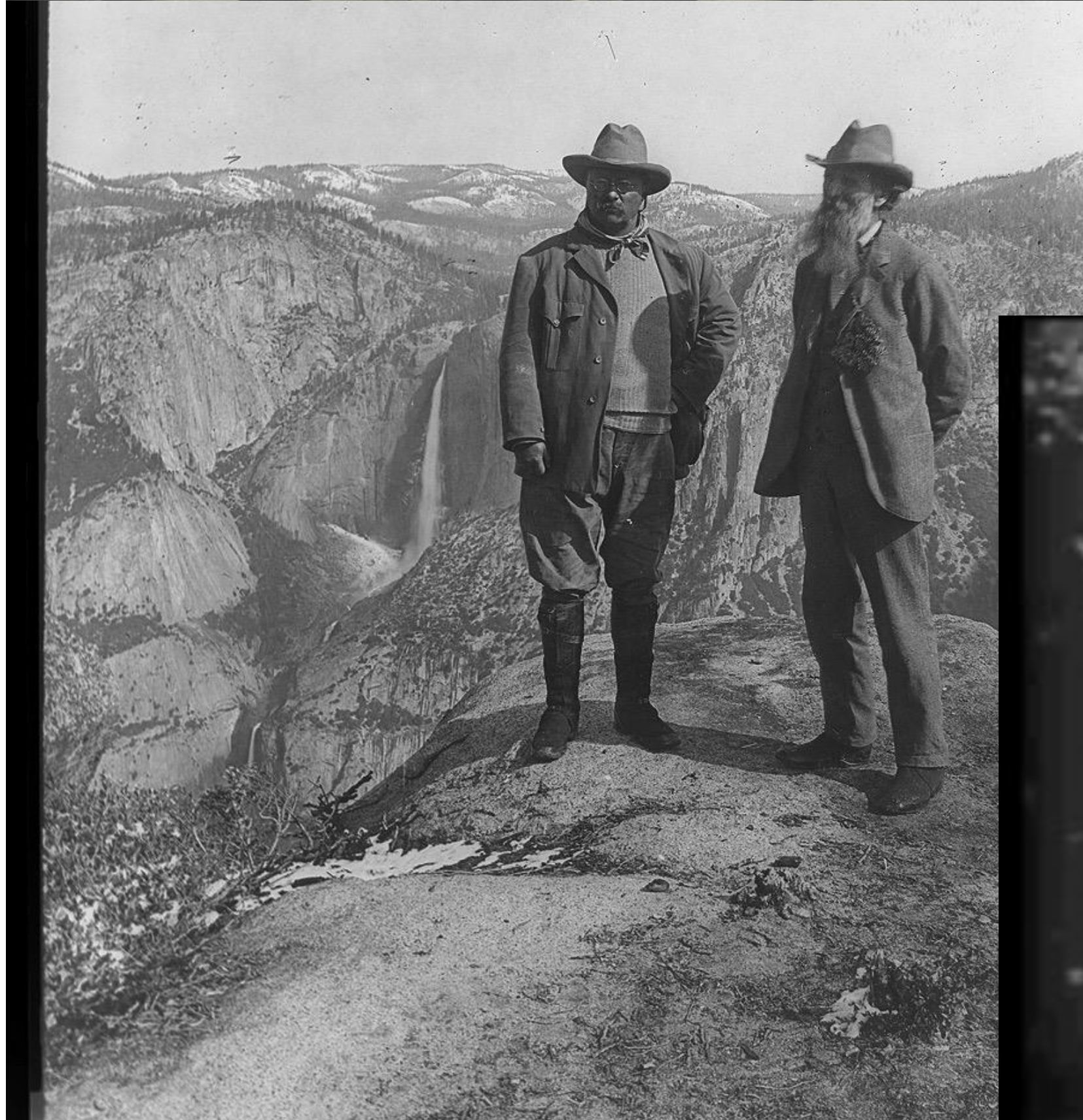
Time Period
When was the portrait created? What was going on in history when the portrait was created?



Explore the sources!
Find the evidence!
Tell his story!



<https://padlet.com/ann16/fnggm51fze>



LIBRARY OF CONGRESS

ASK A LIBRARIAN DIGITAL COLLECTIONS LIBRARY CATALOGS Search Search Loc.gov GO

The Library of Congress > Teachers > Using Primary Sources > Primary Source Analysis Tool

PRIMARY SOURCE ANALYSIS TOOL

Use this tool to record your responses to a primary source.
If you need guidance, use the sample questions. Feel free to go back and forth between the columns; there is no correct order.

Select format of your primary source
Any Format

OBSERVE	REFLECT	QUESTION
Record responses here	Record responses here	Record responses here

