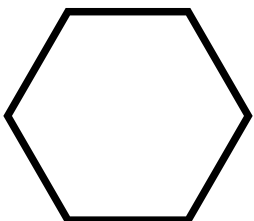


# **2023-24**

# **PATHWAYS CENTER**

# **REPORT**



**PREPARED BY**  
Sarah Bell

# PATHWAYS CENTER

## WHAT'S INCLUDED?

Act 101 Program .....	Page 3
Career Development .....	Page 4
Career & Courses .....	Page 5
Disability Services .....	Page 6
Internships & Work Study .....	Page 7
Mentoring & MUM .....	Page 8
On the Move .....	Page 9
Tutoring Services .....	Page 10
Staff Development .....	Page 11
Staff Service .....	Page 12
Collaboration & Committees .....	Page 13
Pathways Center Staff .....	Page 14

# ACT 101

"The PA Act 101 (Act 101) Program is a state-funded program which allocates funds to Pennsylvania postsecondary institutions that operate an approved Act 101 program. The funds support services to academically and financially disadvantaged students to assist them in successfully completing postsecondary study" (PHEAA, 2023).

## STUDENTS SERVED

55 total students (2023-24)

- 28 returning students
- 27 new students

*More details outlined at right.*

## ACT 101 COUNSELORS

Pathways Center

- Sarah Bell (Act 101 Program Director)
- Sarah Feldberg
- Jaime Stanny
- Sam Pete

Counseling Center

- Jane Owen
- Mary Hamilla
- Monica Drago (Fall only)
- Ed Sutter (Spring only)

Student Development

- Kelley Hardie
- Essence Suggs

## ADVISORY BOARD

Faculty: Chaley Knight, Ken Cairns

Alumna: Ali Cammisa

Staff: Heather Farabee

Community Member: Alexa Bailly

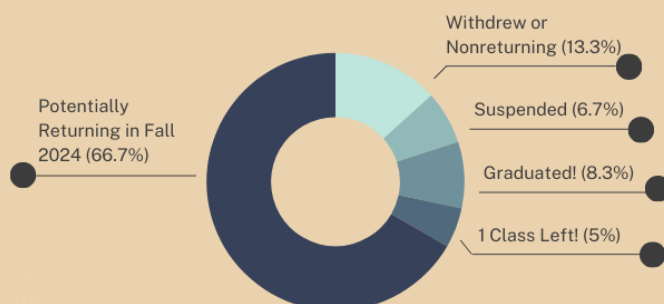
2023-2024

## Act 101 Program

The Act 101 Education Enrichment Program (EEP) at Waynesburg University is designed to equip under-prepared and economically disadvantaged students to succeed in higher education.

### ONE

Student Snapshot (End of 2023-2024 Academic Year)



### TWO

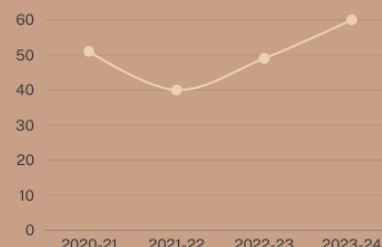
60 of 60 students connected with at least 1 program component



**100%**  
CONNECTED

### THREE

Number of students served (year over year)



### FOUR

Two of the most prominent Act 101 program components are the completion of the contract and the student-counselor connection.

92% Contract Completion

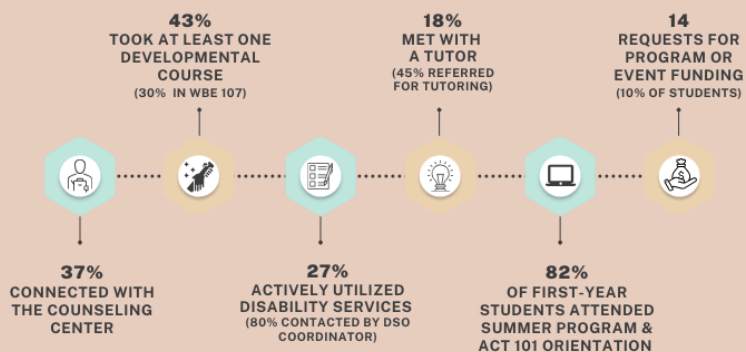


80% Met with EEP Counselor



### FIVE

Outside of one-one-one advising meetings with an EEP Counselor, students engaged in the Act 101 Program by participating in orientation and events, utilizing Pathways Center services, and connecting with the Counseling Center.



**366**

Total Direct Contact Points

(124.5% INCREASE IN OUTREACH FROM 2022-23 TO 2023-24)

**73%**

Received one or more MUM referrals

(MOST COMMON REFERRAL AREAS: D&F REPORT; ACADEMIC SUPPORT; TUTORING; SOS; STUDENTS OF CONCERN)



# CAREER DEVELOPMENT

## EVENTS HOSTED

### **Fall 2023**

Criminal Justice Job & Internship Fair (175 Student Attendees, 43 Employee Participants)

Greene County Job Fair (74 Attendees, 43 Employee Participants)

- *Hosted in Partnership with PA CareerLink Greene County*

Business Job & Internship Fair (72 Attendees, 21 Employer Participants)

Accounting & Finance Consortium Interview Day (Virtual; 3 WU Students Selected)

Workshops: Resume Review\*, Interview Preparation\*, AHN: Negotiating Salary and Benefits

- *Hosted in Partnership with Purpose & Leadership Academy*

Speaker: Rep. Bud Cook (in Collaboration with Stover Scholars and Student Leaders)

### **Spring 2024**

STEAM Career & Internship Fair (40 Student Attendees, 20 Employee Participants)

WestPACS Career & Graduate School Fair (Hosted in Monroeville)

PERC Education Career Fair (Hosted in Monroeville)

Future Professionals Day (Mock Interview Sessions; Resumes, Cover Letters, and Professional Dress Workshop; Career Closet Open House)

- Student Participants: 48 mock interviews; 5 at workshop, 5 career closet visits
- *Hosted in Partnership with Purpose & Leadership Academy*



(Top Left) Criminal Justice Fair;  
(Top Center) Greene County Job  
Fair; (Left and Above) Business  
Career Fair



# CAREER & COURSES

## ALUMNI CAREER SURVEY

### *Class of 2022*

- 82% response rate
- 99% of graduates were employed or in graduate school
  - 97% employed\*
  - 85% employed in their field of study\*
  - 17% in graduate school
- 91% employed in their field of study or in graduate school
- Programs with the Highest Response Rate:
  - Undergraduate: Chemistry & Forensic Science, English, Interdisciplinary Studies, General Studies - Associate's Degree (100% for all)
  - Graduate: Counseling, Education, Athletic Training (100% for all)

*\*Highest % in all recorded data, dating back to 2011*

## COURSES TAUGHT

### Summer Strategies for Academic Success

- Pilot Program intended to provide academic strategies in advance of first college semester (required for conditionally admitted students and encouraged for Act 101 students)
- 40 students enrolled and passed
- 67.5% of students retained Fall to Spring

### Strategies for Academic Success (Fall and Spring)

### Professional Development Workshop

## CAREER CLOSET

*Fall: 49 Students*

*Spring: 59 Students*

*63.8% increase in usage from 2022-23 to 2023-24*

## ONLINE RESOURCES

### *Handshake*

- 312 students activated their account
- 159 submitted an application
- Top major: Computer Science

### *Focus2Career*

- 93 students explored career options

### *Career Development & Professional Skills*

### *Canvas Course (Accessible 24/7)*



*Sekye Miles and Joe Rivera were each awarded \$250 from PA-NOSS*

# DISABILITY SERVICES (DSO)

## ACADEMIC ACCOMMODATIONS

Fall 2023: 46 unique students (51 total requests)\*\*

- 35% increase in comparison to Fall 2022
- 6 graduate students; 40 undergraduate

Spring 2024: 10 unique students (7 first-time students; 3 adjusted existing accommodations)

*\*\* Difference in number of unique students and total accommodations arranged reflects students who received some form of accommodation during FA 22 but requested adjustment to existing accommodations or new accommodations, generally with submission of new or more comprehensive documentation.*

## APPROVED HOUSING/DINING ACCOMMODATIONS

Fall 2023: 33 unique students (50% increase in comparison to Fall 2022)

Spring 2024: 7 unique students

## TEMPORARY OR PROVISIONAL ADJUSTMENTS

Fall 2023: 34 unique students (39 total requests)\*\*\*

- 79% increase in comparison to Fall 2022
- Concussions (5); Injury or Surgery (19); Unclear Diagnosis or Diagnosis in Progress (8); RX issue (1); Exacerbation of Chronic Condition (1)

Spring 2024: 27 unique students (37 total requests)\*\*\*

- 11 concussions, 10 surgery/injury, 2 uncertain diagnosis, 2 Rx issues, 2 severe illness

*\*\*\*Difference in unique students and total temporary accommodations arranged reflects students who were granted temporary accommodations that required adjustment or extension during the semester (due to prolonged symptoms, updated medical information, etc.).*

## PREGNANT OR PARENTING STUDENTS

Fall 2023: 5 unique students (4 pregnancy; 1 parenting)

- 3 Undergraduate
- 2 Graduate

Spring 2024: 3 unique students

- 2 Undergraduate
- 1 Graduate

## DSO COORDINATOR: STUDENT CONTACT

Summer 2023: 62 appointments

Fall 2023: 198 appointments

Spring 2023: 198 appointments

## TOTAL DSO CASELOAD

Fall 2023: 180

- 23% increase since Fall 2022

Spring 2024: 172

- 15.4% increase

## TOTAL REQUESTS

Fall 2023: 124

- 40% increase

Spring 2024: 57

- 16% increase

## DSO EXAMS PROCTORED

Fall 2023: 521

- 16% increase

Spring 2024: 427

# INTERNSHIPS & WORK STUDY

## INTERNSHIP OVERVIEW

### **Summer & Fall**

90 Internship Applications

- 85 Completed For Credit (94%)

### **Spring**

48 Internship Applications

- 47 Completed For Credit (98%)

# 1,106

*85% increase in qualifying students (last year to this year)*

**NUMBER OF STUDENTS WHO QUALIFIED FOR FEDERAL WORK STUDY DURING THE 2023-24 ACADEMIC YEAR**

## INTERNSHIP SITES

Wildlife Forensics Academy  
NIWC U.S. Naval Marine Mammal Program  
Harrisburg Senators  
Eastern Panhandle Drug and Violent Crimes Task Force  
U.S. Forestry Service  
Jennerstown Speedway  
ATF Pittsburgh  
... and more!

## WORK STUDY BY THE NUMBERS

- Fall 2023: 244 students hired
- Spring 2024: 270 students hired

## EXPERIENTIAL EDUCATION

### **The Washington Center**

Spring Semester Internship

- Anamarie Lipinski
  - Location: DACOR Bacon House

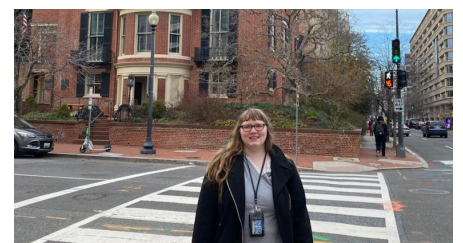
Inside Washington Seminar

- Zoe Belknap
- Ethan Lown
- Dheaven Kelley
- Steven Trettel
- Leader: Dr. Larry Stratton

### **Summer Study Abroad\***

- Anamarie Lipinski
- Location: Japan

*\*Before Study Abroad programs were relocated to a new office*





# MENTORING & MUM

## STUDENTS RECEIVING MENTORING

### Fall 2023

- 34 students (24 retained)  
(79% increase from Fall 2022)

### Spring 2024

- 42 students

## FACULTY/STAFF SERVING AS MENTORS

### Fall 2023

- 22 (2 left during the semester)

### Spring 2024

- 25 (1 left during the semester)

1,000+

- Fall 2023: 603
- Spring: 451

**NUMBER OF  
MUM  
REFERRALS  
HANDLED  
DURING  
THE 2023-24  
ACADEMIC  
YEAR.**

## REFERRALS BY CARE AREA

- Referrals by Type (Fall)
  - 46% Tutor Referral
  - 18% Attendance
  - 13% Counseling
  - 10% Academic Support
  - 7% Academic Mentoring
  - 4% Academic Integrity
- Highest Referral Period
  - Fall: Mid-September
  - Spring: February
- Referrals by Type (Spring)
  - 33% Tutor Referral
  - 29% Attendance
  - 13% Academic Support
  - 11% SOS
  - 10% Students of Concern
  - 5% Academic Integrity or Multiple Offense

## MIDTERM CHECK INS

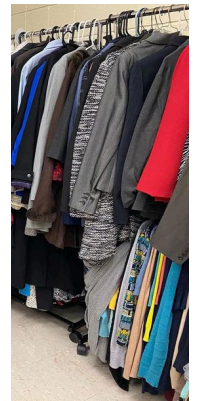
### Fall 2023

- 331 students on the D/F/W Report List at Midterms (566 total reports)
  - 200 were contacted by the Pathways Center Staff (60% of students)
    - Students with one D were not contacted
    - Students with more than one D/F/W who were resident students were contacted by Student Development

### Spring 2024

- 307 students on the D/F Report List (578 total reports)
  - 285 were contacted by the Pathways Center Staff (93%)

# ON THE MOVE



## PATHWAYS OFFICES, SERVICES MOVE TO UPDATED LOCATIONS

- Disability Services and the Testing Center were relocated to the Knox Learning Center in the Fall 2023 semester. This move expanded space available for students with testing accommodations (an area that continues to grow each year at Waynesburg University).
  - Sarah Feldberg's office relocated to the Knox Learning Center
  - Heather Farabee's desk relocated to the Testing Center
- A small Decompression Space was established in Eberly Library for students who need a private, quiet location to decompress.
- The Tutoring Center was open and became a centralized hub for individual and group sessions; the space was temporarily closed for the Spring 2024 semester for construction.
  - Jaime Stanny Emerson's office was temporarily relocated to Eberly B19 (the former Center for Teaching Excellence)
- The Career Closet was temporarily relocated to Buhl Hall, room 203, enabling students to continue to access free, professional clothing while construction takes place in the permanent location (Eberly Library)

# TUTORING SERVICES

## TUTORING RECEIVED

### Fall 2023

- 340 reported sessions
  - 40% increase from Fall 2022
  - 488 tutoring appointments scheduled

### Spring 2024

- 101 reported sessions
  - 223 tutoring appointments scheduled

## CLASSES WITH A TUTOR

### Fall 2023

- 69 classes had at least 1 tutor
  - 47% increase from Fall 2022

### Spring 2024

- 56 classes had at least 1 tutor

## PEER TUTORS HIRED

### Fall 2023

- 25 Tutors Hired
  - 18 recommended to cover more than one class

### Spring 2024

- 22 Tutors Hired
  - 12 recommended to cover more than one class

## ACADEMIC MAJORS WITH MOST REQUESTED APPOINTMENTS

### Fall 2023

- Biology (39%), Chemistry (29%), and Nursing (18%) accounted for 86% of Fall semester tutoring appointments

### Spring 2024

- Biology (41.5%), Chemistry (20%), Mathematics (10%) and Political Science (10%) accounted for 81.5% of Spring semester tutoring appointments



## STUDY TABLES OFFERED

### Fall 2023

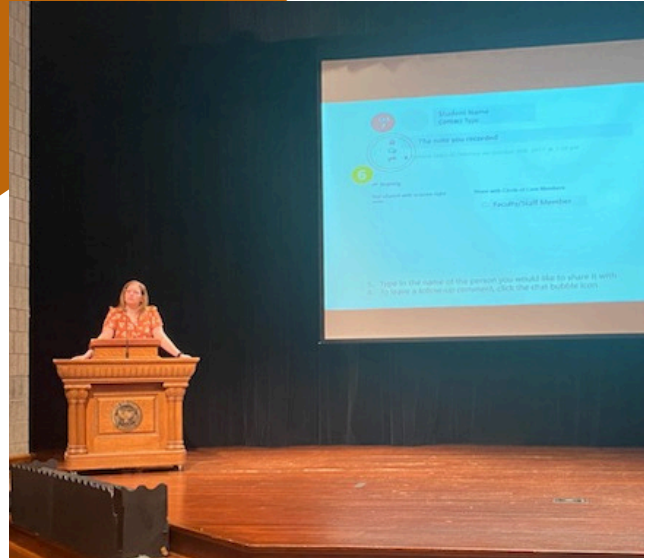
- Nursing, Math, Men's Soccer, NUR 426 (Biology offered through the academic department)

### Spring 2024

- Men's Soccer, Math, Nursing



# STAFF DEVELOPMENT

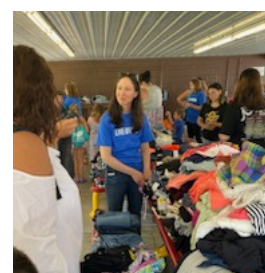


(Top Left) The Pathways Center staff engaged in campus-wide professional development during Convocation; (Above) Jaime Stanny Emerson led a Third Thursday session on MUM, Waynesburg's referral system; (At Left) Sarah Feldberg led a Third Thursday session on Disability Services; (Bottom Left) Heather Farabee and Sarah Bell dressed in themed shirts for Halloween; (Below) Sarah Bell Presented on "The Importance of Self-Advocacy for Mental Health Practitioners" at the PCA Conference in Harrisburg.





# STAFF SERVICE



The Pathways Center Staff engaged in service opportunities during the 2023-24 academic year, including participating in United Way's Stuff the Bus event. Sarah Bell and Zoe Belknap (student worker) served in Louisville, Kentucky, during a fall break service trip. Sarah Bell and Jaime Stanny Emerson served food to students at the University's annual Thanksgiving Dinner.

- [Click here to read more about the Louisville, Kentucky trip](#)



# COLLABORATION & COMMITTEES

## COLLABORATION

- Purpose & Leadership Academy
  - StrengthsFinder Workshop
  - Mock Interview Session, Resume Workshop, and Career Closet Open House (Part of Future Professionals Day)
    - Interviewers pictured with Sarah Bell (at right)
  - Various Career Development Workshops
- Business Services Team
  - Collaborative effort between Waynesburg University, PA CareerLink Greene County, and Greene County Career & Technology Center
    - Monthly meetings
    - Two career fairs (fall and spring)
- CARE Team
  - Joint effort between Student Development, the Counseling Center, the Pathways Center, and Athletics to provide holistic support to WU students
- Brick Reading to support Institutional Advancement campaign - staff pictured at right after receiving WU hats as a thank you
- Employer Relations
  - Workshop hosted by Northwestern Mutual
  - Speakers from Fastenal
  - Various Tabling Opportunities and Class Visits



## COMMITTEE WORK

- Academic Standards Committee
- Administrative Staff Development Committee
- Enrollment Management Committee
- Staff Development Committee
- University Relations and Revenue Generation Committee
- Academic Affairs Group

## CONFERENCES

- Pennsylvania Counseling Association
- Pennsylvania Chapter of the National Organization for Student Success

## MEMBERSHIPS

- Disability Services: AHEAD
- Career Development: NACE, Accounting & Finance Consortium, PERC, WestPACS
- General: PA-NOSS



# PATHWAYS CENTER STAFF 2023-24



**SARAH BELL .....**

Pathways Center Director

**SARAH FELDBERG .....**

Coordinator of Disability Services

**JAIME STANNY EMERSON .....**

Academic Support Specialist

**SAM PETE .....**

Academic Support Specialist

**HEATHER FARABEE .....**

Secretary

**BRIAN CARR .....**

Director of Records &  
Registration

*Pathways Center Supervisor*



